

BOX SCORE: *** FINAL ***

Date: 03-25-88 Site: State Tourney, Frankfort Attendance: 3,765

Team: Southern

NO.	NAME	TOTAL FG		3-POINT		FT	FTA	REB				PF	TP	A	TO	BLK	S	MIN
		FG	FGA	FG	FGA			O	D	T	T							
24	Harrison, Lisa	13	24	0	0	1	3	7	9	16	1	27	2	2	2	4	31	
50	Collins, Cindy	8	15	0	0	2	2	1	4	5	1	18	0	1	0	1	26	
55	Moore, Mioshi	4	11	0	1	0	0	5	2	7	1	8	0	1	0	0	31	
04	Burden, Michelle	0	4	0	0	1	2	1	2	3	0	1	6	1	0	3	31	
21	Woods, Tina	1	3	0	0	3	4	2	1	3	0	5	2	3	0	1	28	
34	Grant, Steph.	0	0	0	0	0	0	0	0	0	3	0	0	0	0	0	8	
10	Davis, Debbie	0	0	0	0	1	2	0	1	1	0	1	0	0	0	1	1	
15	Burden, Melissa	0	1	0	0	0	0	0	0	0	0	0	0	0	0	0	1	
35	Kiggins, Pam	0	0	0	0	0	0	0	0	0	0	0	0	0	0	0	1	
05	Andres, Kim	0	0	0	0	0	0	0	0	0	0	0	0	0	0	0	1	
23	Hoffman, Julie	0	0	0	0	0	0	0	0	0	0	0	0	0	0	0	1	
TEAM								1	1	2								
TOTALS		26	58	0	1	8	13	17	20	37	6	60	10	8	2	10	160	

Percentages:	Game	FG	26/58	44.8%	3-PT.	0/1	0.0%	FT	8/13	61.5%
Period 1	1	7/15	46.7%	0/0	0.0%	0/0	0.0%	0/0	0/0	0.0%
Period 2	2	9/16	56.3%	0/1	0.0%	1/2	50.0%	2/2	100.0%	100.0%
Period 3	3	9/16	56.3%	0/0	0.0%	2/2	100.0%	2/2	100.0%	100.0%
Period 4	4	1/11	9.1%	0/0	0.0%	5/9	55.6%	5/9	55.6%	55.6%

Team: Manual

NO.	NAME	TOTAL FG		3-POINT		FT	FTA	REB				PF	TP	A	TO	BLK	S	MIN
		FG	FGA	FG	FGA			O	D	T	T							
43	Doyle, Gwen	1	4	0	0	0	0	4	5	9	2	2	1	1	1	0	27	
55	Williams, Sam.	8	19	0	2	0	0	5	3	8	1	16	3	1	0	2	31	
30	James, Ramonda	4	9	0	0	0	0	4	0	4	4	8	0	1	1	0	27	
22	Dean, Morek	3	9	1	1	2	4	0	1	1	4	9	1	3	0	1	31	
24	Drummond, Amy	2	8	0	1	2	4	0	4	4	0	6	2	4	0	0	31	
51	Smith, Angie	0	2	0	0	0	0	0	1	1	0	0	0	0	0	0	8	
45	Mills, Johnrye	0	1	0	0	0	0	1	1	2	0	0	0	0	0	0	3	
10	Wheatley, T.	0	0	0	0	0	0	0	0	0	1	0	0	1	0	0	1	
12	Swan, Tina	0	0	0	0	0	0	0	0	0	0	0	0	0	0	0	1	
TEAM								2	2	2								
TOTALS		18	52	1	4	4	8	14	17	31	12	41	7	11	2	3	160	

Percentages:	Game	FG	18/52	34.6%	3-PT.	1/4	25.0%	FT	4/8	50.0%
Period 1	1	5/18	27.8%	0/0	0.0%	0/0	0.0%	0/0	0/0	0.0%
Period 2	2	3/6	50.0%	1/1	100.0%	2/4	50.0%	2/4	50.0%	50.0%
Period 3	3	6/13	46.2%	0/0	0.0%	1/2	50.0%	1/2	50.0%	50.0%
Period 4	4	4/15	26.7%	0/3	0.0%	1/2	50.0%	1/2	50.0%	50.0%

OFFICIALS: Ken Catron, Keith Walker, Alt.-J. Cupp
 Technicals: None

SCORE BY PERIODS	
Southern	14 19 20 7 = 60
Manual	10 9 13 9 = 41

Southern "Lady Trojans" vs Manual "Lady Crimson"
2nd Half Play by Play

PAGE : 2

Tip off at 2:30 p.m. on 03/25/88 at State Tourney, Frankfort
Produced by the K.H.S.A.A. Stat Crew with FINAL III™

Player	Team	Manual	Time	Score	Southern	Player	Team
Doyle, Gwen, Williams, Sam.	Team	Manual			Burden, Michelle, Woods, Tina, Harrison, Lisa, Moore, Mioshi, Grant, Steph.		
8-16	50.0%	15-40 37.5%	4 ft Lane Follow by Williams, Sam.	4 7:11 *34-53			
3-7	42.8%	16-41 39.0%	Layup Off Fast Break by Dean, Monek	4 6:33 *36-53			
				4 5:11	Foul on Grant, Steph.	2	3
				4 4:01	Foul on Grant, Steph.	3	4
				4 4:01	Sub In: Collins, Cindy Out: Grant, Steph.		
2-4	50.0%	4-8 50.0%	Dean, Monek, 2 Free Throws missed 1st made 2nd	4 4:01 *37-53			
2-7	28.5%	17-44 38.6%	16 ft Right Base Line Jump shot by Drummond, Amy	4 3:39 *39-53			
1		6	Assist by Dean, Monek				
			REB: 25 A: 6 BLK: 2 TO: 10 PF: 3	4 3:25	REB: 32 A: 9 BLK: 1 TO: 8 PF: 4		
			S: 3 FT: 4-8 50.0% FG: 17-44 38.6%	T I M E - O U T Southern No. 1	S: 9 FT: 3-4 75.0% FG: 25-55 45.4%		
4-9	44.4%	18-45 40.0%	8 ft Right Base Line Jump shot by James, Ramonda	4 3:11 *41-53			
2		7	Assist by Drummond, Amy				
2		4	Foul on Dean, Monek	4 2:07			
			REB: 25 A: 7 BLK: 2 TO: 10 PF: 4	4 2:07	REB: 32 A: 9 BLK: 1 TO: 8 PF: 4		
			S: 3 FT: 4-8 50.0% FG: 18-45 40.0%	No. 2 Manual T I M E - O U T	S: 9 FT: 3-4 75.0% FG: 25-55 45.4%		
				4 2:04	41-55* 3 ft Lane Bank by Collins, Cindy	8-14	57.1% 26-56 46.4%
					Assist by Burden, Michelle	6	10
3		5	Foul on James, Ramonda	4 1:49			
				4 1:49	Harrison, Lisa, 1 & Bonus missed 1st	0-1	00.0% 3-5 60.0%
4		6	Foul on James, Ramonda	4 1:24			
				4 1:24	41-57* Collins, Cindy, 1 & Bonus made both	2-2	100% 5-7 71.4%
3		7	Foul on Dean, Monek	4 1:03			
			REB: 27 A: 7 BLK: 2 TO: 10 PF: 7	4 1:03	REB: 35 A: 10 BLK: 2 TO: 8 PF: 4		
			S: 3 FT: 4-8 50.0% FG: 18-49 36.7%	T I M E - O U T Southern No. 2	S: 9 FT: 5-7 71.4% FG: 26-57 45.6%		
			Subs In: Smith, Angie, Mills, Johnnye	4 1:03			
			Out: Dean, Monek, Williams, Sam.				
			Subs In: Dean, Monek, Williams, Sam.	4 1:03			
			Out: James, Ramonda, Doyle, Gwen				
4		8	Foul on Dean, Monek	4 1:03	41-58* Harrison, Lisa, 1 & Bonus made 1st missed 2nd	1-3	33.3% 6-9 66.6%
				4 1:01			
				4 0:38	Subs In: Davis, Debbie, Burden, Melissa, Kiggins, Pam, Andres, Kim		
					Out: Woods, Tina, Harrison, Lisa, Collins, Cindy, Moore, Mioshi		
			Subs In: Wheatley, T., Swan, Tina	4 0:38			
			Out: Dean, Monek, Smith, Angie				
			Sub In: Smith, Angie Out: Williams, Sam.	4 0:38	41-59* Burden, Michelle, 1 & Bonus made 1st missed 2nd	1-2	50.0% 7-11 63.6%
				4 0:16	Sub In: Hoffman, Julie Out: Burden, Michelle		
1		9	Foul on Wheatley, T.	4 0:02			
				4 0:02	41-60* Davis, Debbie, 2 Free Throws missed 1st made 2nd	1-2	50.0% 8-13 61.5%

Southern "Lady Trojans" vs Manual "Lady Crimson"
 2nd Half Play by Play

Tip off at 2:30 p.m. on 03/25/88 at State Tourney, Frankfort
 Produced by the K.H.S.A.A. Stat Crew with FINL III™

PAGE : 1

Player	Team	Manual
Doyle, Gwen, Williams, Sam.		James, Ramonda, Dean, Monek, Drummond, Amy
3-6	50.0%	9-25 36.0%
1	1	Foul on James, Ramonda
4-8	50.0%	10-28 35.7%
1	2	2 ft Lane Follow by Williams, Sam. Foul on Dean, Monek
5-9	55.5%	11-29 37.9%
2	3	4 ft Lane Driving by Williams, Sam. Foul on James, Ramonda
2-4	50.0%	3-6 50.0%
		Drummond, Amy, 2 Free Throws missed 1st made 2nd
3-7	42.8%	12-33 36.3%
		4 ft Lane Follow by James, Ramonda
6-13	46.1%	13-36 36.1%
1	4	16 ft Left Angle Jump shot by Williams, Sam. Assist by Drummond, Amy
7-14	50.0%	14-37 37.8%
1	5	13 ft Lane Jump shot by Williams, Sam. Assist by Doyle, Gwen

Time	Score	Southern	Player	Team
			Harrison, Lisa, Collins, Cindy, Moore, Mioshi, Burden, Michelle, Woods, Tina	
3 7:36	*21-33			
3 7:26	21-35*	Layup Off Fast Break by Moore, Mioshi	3-8	37.5% 17-32 53.1%
		Assist by Harrison, Lisa	1	5
3 6:42				
3 6:38	21-37*	Woods, Tina, 2 Free Throws made both	3-4	75.0% 3-4 75.0%
3 6:23	*23-37			
3 6:14				
3 5:46	23-39*	3 ft Lane Follow by Moore, Mioshi	4-9	44.4% 18-35 51.4%
3 5:28	*25-39			
3 5:17				
3 4:41	25-41*	7 ft Lane Turnaround by Harrison, Lisa	9-16	56.2% 19-37 51.3%
		Assist by Burden, Michelle	3	6
3 4:24		Foul on Harrison, Lisa	1	1
3 4:23	*26-41			
3 3:21		Foul on Moore, Mioshi	1	2
3 3:07	*28-41			
3 2:44	28-43*	Follow Layup by Harrison, Lisa	10-17	58.8% 20-41 48.7%
3 2:22	28-45*	Layup Off Fast Break by Collins, Cindy	7-12	58.3% 21-42 50.0%
		Assist by Harrison, Lisa	2	7
3 1:59	28-47*	15 ft Lane Jump shot by Harrison, Lisa	11-18	61.1% 22-44 50.0%
3 1:55		Sub In: Grant, Steph. Out: Collins, Cindy		
3 1:55				
3 1:36	28-49*	Layup Off Fast Break by Woods, Tina	1-1	100% 23-45 51.1%
		Assist by Burden, Michelle	4	8
3 1:20	*30-49			
3 0:56	30-51*	8 ft Lane Turnaround by Harrison, Lisa	12-19	63.1% 24-46 52.1%
		Assist by Burden, Michelle	5	9
3 0:37	*32-51			
3 0:04	32-53*	13 ft Left Side Jump shot by Harrison, Lisa	13-20	65.0% 25-47 53.1%

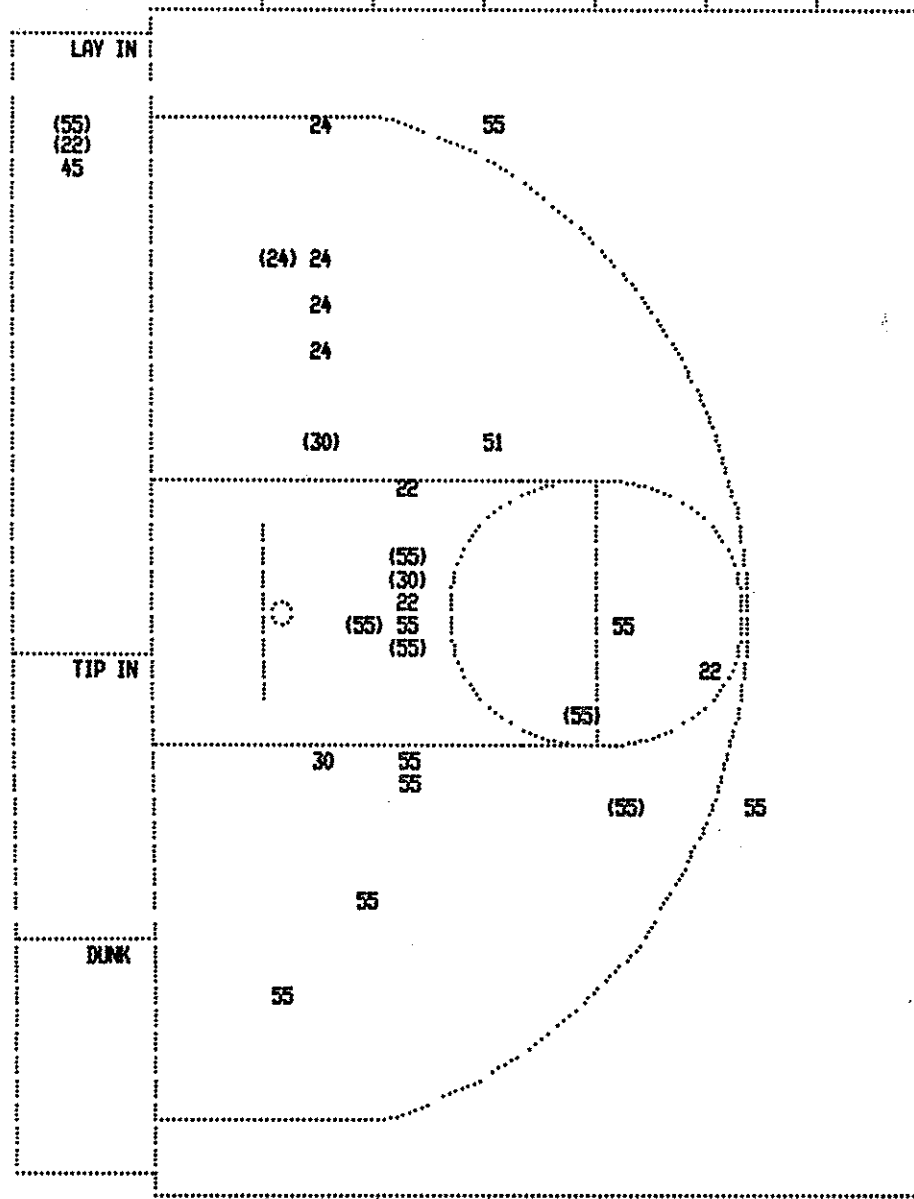
REB: 18 A: 3 BLK: 0 TO: 9 PF: 3
 S: 3 FT: 3-6 50.0% FG: 12-34 35.2%

No. 1 Manual TIME - O U T

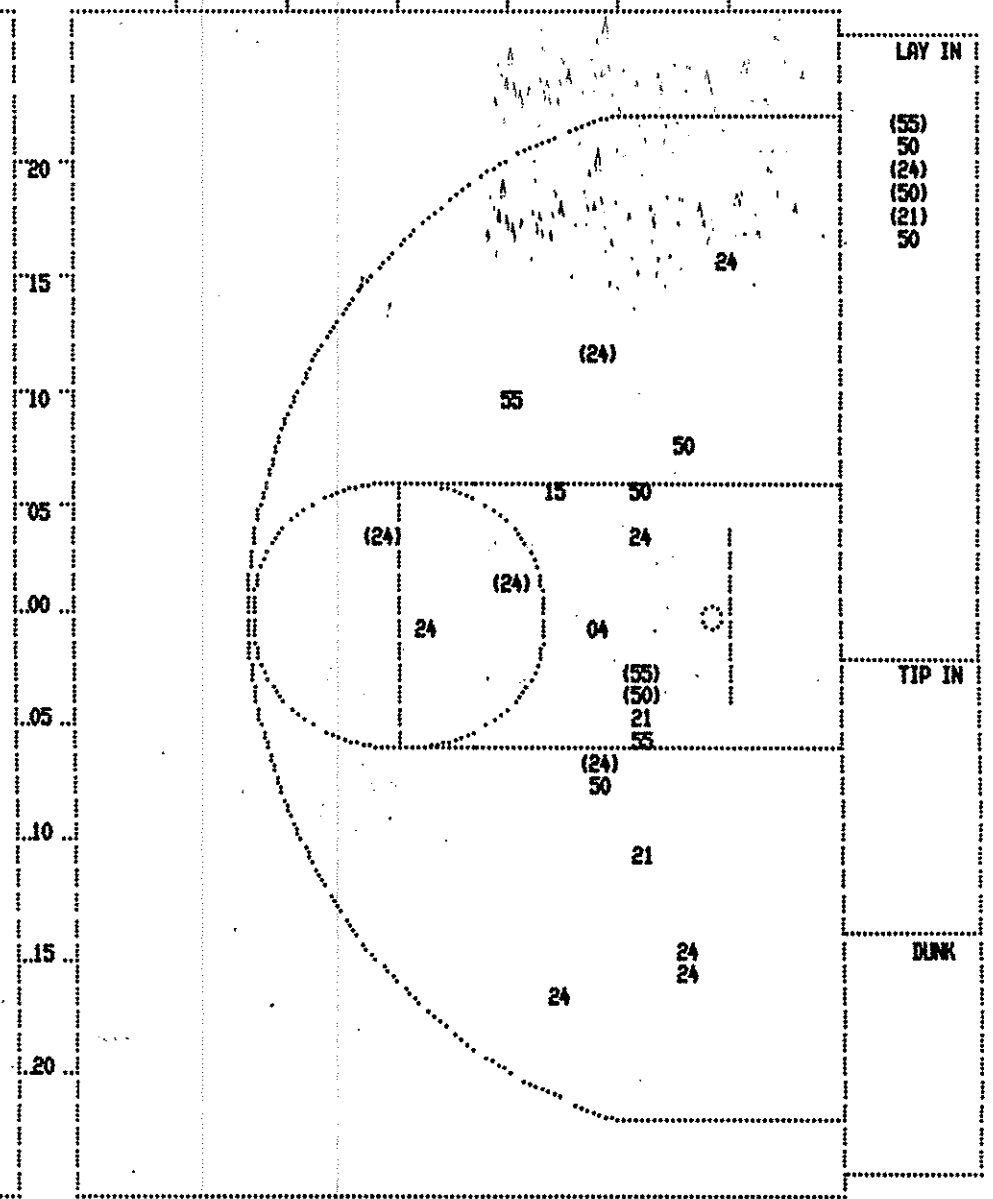
REB: 26 A: 7 BLK: 0 TO: 6 PF: 2
 S: 8 FT: 3-4 75.0% FG: 22-44 50.0%

Sub In: Smith, Angie Out: James, Ramonda

SECOND HALF SHOT CHART Produced by the K.H.S.A.A. Stat Drew with FINAL III™



Player		Manual	Player		Player	
55 - Williams,	6/14	42.8%	51 - Smith, Ang	0/1	0.0%	
30 - James, Ram	2/3	66.6%				
22 - Dean, Mone	1/4	25.0%				
24 - Drummond,	1/5	20.0%				
45 - Mills, Joh	0/1	0.0%				
Layups	1-9 Ft	10-15 Ft	Over 15 Ft	3 Pointers	Total	
2/3	5/11	1/6	2/5	0/3	10/28	
66.7%	45.5%	16.7%	40.0%	0.0%	35.7%	



Player		Southern	Player		Player	
24 - Harrison,	5/11	45.4%	15 - Burden, Ne	0/1	0.0%	
50 - Collins, C	2/7	28.5%				
55 - Moore, Mio	2/4	50.0%				
04 - Burden, Mic	0/1	0.0%				
21 - Hoods, Tin	1/3	33.3%				
Layups	1-9 Ft	10-15 Ft	Over 15 Ft	3 Pointers	Total	
4/6	4/12	2/7	0/2		10/27	
66.7%	33.3%	28.6%	0.0%		37.0%	

BOX SCORE: * OFFICIAL FIRST HALF * Date: 03-25-88 Site: State Tourney, Frankfort Attendance: 3,765

Team: Southern

NO.	NAME	TOTAL FG		3-POINT		FT	FTA	REB			PF	TP	A	TO	BLK	S	MIN
		FG	FGA	FG	FGA			O	D	T							
24	Harrison, Lisa	8	13	0	0	0	0	6	5	11	0	16	0	1	0	2	16
50	Collins, Cindy	6	8	0	0	0	0	0	2	2	1	12	0	1	0	1	16
55	Moore, Mioshi	2	7	0	1	0	0	3	1	4	0	4	0	0	0	0	16
04	Burden, Michelle	0	3	0	0	0	0	0	0	0	0	0	2	1	0	2	16
21	Woods, Tina	0	0	0	0	1	2	0	1	1	0	1	2	2	0	1	13
34	Grant, Steph.	0	0	0	0	0	0	0	0	0	1	0	0	0	0	0	3
TEAM								1	1								
TOTALS		16	31	0	1	1	2	9	10	19	2	33	4	5	0	6	80
Percentages:		HALF-----		FG		16/ 31	51.6%	3-PT.		0/ 1	0.0%	FT		1/ 2	50.0%		
		Period 1				7/ 15	46.7%			0/ 0	0.0%			0/ 0	0.0%		
		Period 2				9/ 16	56.3%			0/ 1	0.0%			1/ 2	50.0%		

Team: Manual

NO.	NAME	TOTAL FG		3-POINT		FT	FTA	REB			PF	TP	A	TO	BLK	S	MIN
		FG	FGA	FG	FGA			O	D	T							
43	Doyle, Gwen	1	4	0	0	0	0	2	1	3	2	2	0	0	0	0	12
55	Williams, Sam.	2	5	0	0	0	0	3	2	5	1	4	3	1	0	1	16
30	James, Ramonda	2	6	0	0	0	0	1	0	1	0	4	0	1	0	0	14
22	Dean, Monek	2	5	1	1	1	2	0	1	1	0	6	0	1	0	1	16
24	Drummond, Amy	1	3	0	0	1	2	0	2	2	0	3	0	3	0	0	16
51	Smith, Angie	0	1	0	0	0	0	0	0	0	0	0	0	0	0	0	4
45	Mills, Johnnye	0	0	0	0	0	0	0	0	0	0	0	0	0	0	0	2
TEAM								2	2								
TOTALS		8	24	1	1	2	4	6	6	12	3	19	3	6	0	2	80
Percentages:		HALF-----		FG		8/ 24	33.3%	3-PT.		1/ 1	100.0%	FT		2/ 4	50.0%		
		Period 1				5/ 18	27.8%			0/ 0	0.0%			0/ 0	0.0%		
		Period 2				3/ 6	50.0%			1/ 1	100.0%			2/ 4	50.0%		

OFFICIALS: Ken Catron, Keith Walker, Alt.-J. Cupp
 Technicals: None

SCORE BY PERIODS			
Southern	14	19	= 33
Manual	10	9	= 19

Produced by the K.H.S.A.A. Stat Crew with FINAL III™

Southern "Lady Trojans" vs Manual "Lady Crimson's"
1st Half Play by Play

PAGE : 1

Tip off at 2:30 p.m. on 03/25/88 at State Tourney, Frankfort
Produced by the K.H.S.A.A. Stat Crew with FINAL III**

Player	Team	Manual	Time	Score	Southern	Player	Team
Doyle, Gwen, Williams, Sam.	James, Ramonda, Dean, Monek, Drummond, Amy				Harrison, Lisa, Collins, Cindy, Moore, Mioshi, Burden, Michelle, Woods, Tina		
1-1	100%	1-1, 100%	7 ft Lane Bank by James, Ramonda	1 7:23	0-2*	4 ft Lane Turnaround by Moore, Mioshi	1-2 50.0%
			Assist by Williams, Sam.			Assist by Woods, Tina	1-3 33.3%
				1 6:49	*2-2		1 1
				1 6:31	2-4*	Follow Layup by Moore, Mioshi	2-3 66.6%
				1 5:57	2-6*	6 ft Lane Turnaround by Harrison, Lisa	1-3 33.3%
						Assist by Burden, Michelle	1 2
			Foul on Doyle, Gwen	1 5:37			
				1 4:53	2-8*	10 ft Lane Jump shot by Harrison, Lisa	2-4 50.0%
				1 4:38	*4-8		4-7 57.1%
				1 4:20	*6-8		
				1 4:04	*8-8		
				1 3:16	8-10*	Driving Scoop by Collins, Cindy	1-2 50.0%
				1 2:55	*10-10		5-11 45.4%
				1 2:27			
				1 2:23	10-12*	17 ft Right Angle Jump shot by Harrison, Lisa	3-6 50.0%
				1 1:47	10-14*	4 ft Lane Jump shot by Collins, Cindy	2-3 66.6%
							6-12 50.0%
							7-13 53.8%

Southern "Lady Trojans" vs Manual "Lady Crimson's"
1st Half Play by Play

PAGE : 2

Tip off at 2:30 p.m. on 03/25/88 at State Tourney, Frankfort
Produced by the K.H.S.A.A. Stat Crew with FINAL III**

Player	Team	Manual	Time	Score	Southern	Player	Team
Smith, Angie, Williams, Sam.	Mills, Johnnye, Dean, Monek, Drummond, Amy				Harrison, Lisa, Collins, Cindy, Moore, Mioshi, Burden, Michelle, Woods, Tina		
2-4	50.0%	6-19 31.5%	3 pt 22 ft Straight Away Jump shot by Dean, Monek	2 7:50	10-16*	14 ft Left Base Line Jump shot by Collins, Cindy	3-4 75.0%
				2 7:20	*13-16		8-16 50.0%
				2 6:32	13-18*	8 ft Right Base Line Turnaround by Harrison, Lisa	4-7 57.1%
				2 5:57	13-20*	13 ft Lane Jump shot by Harrison, Lisa	5-8 62.5%
						Assist by Woods, Tina	10-18 55.5%
							2 3
				2 5:53			
				2 5:53			
				2 4:23	13-22*	14 ft Left Base Line Jump shot by Collins, Cindy	4-5 80.0%
				2 3:56			11-21 52.3%
				2 3:56			
				2 3:53	13-23*	Woods, Tina, 2 Free Throws made 1st missed 2nd	1-2 50.0%
				2 3:35	*15-23		1-2 50.0%
				2 3:17	15-25*	8 ft Left Base Line Driving by Harrison, Lisa	6-9 66.6%
				2 3:34		Foul on Collins, Cindy	12-23 52.1%
				2 3:05	*16-25		1 1
				2 3:05		Sub In: Grant, Steph. Out: Woods, Tina	
				2 2:31	16-27*	12 ft Left Side Jump shot by Collins, Cindy	5-7 71.4%
				2 2:13		Foul on Grant, Steph.	13-26 50.0%
				2 2:13	*17-27		1 2
				2 1:57	17-29*	12 ft Right Base Line Turnaround by Harrison, Lisa	7-10 70.0%
				2 1:34	*19-29		14-27 51.8%
				2 0:55	19-31*	Follow Layup by Harrison, Lisa	8-13 61.5%
				2 0:31	19-33*	Layup Off Fast Break by Collins, Cindy	6-8 75.0%
						Assist by Burden, Michelle	15-30 50.0%
							16-31 51.6%
							2 4

REB: 9 A: 2 BLK: 0 TO: 3 PF: 2
S: 2 FT: 0-0 00.0% FG: 6-19 31.5%

TIME - OUT

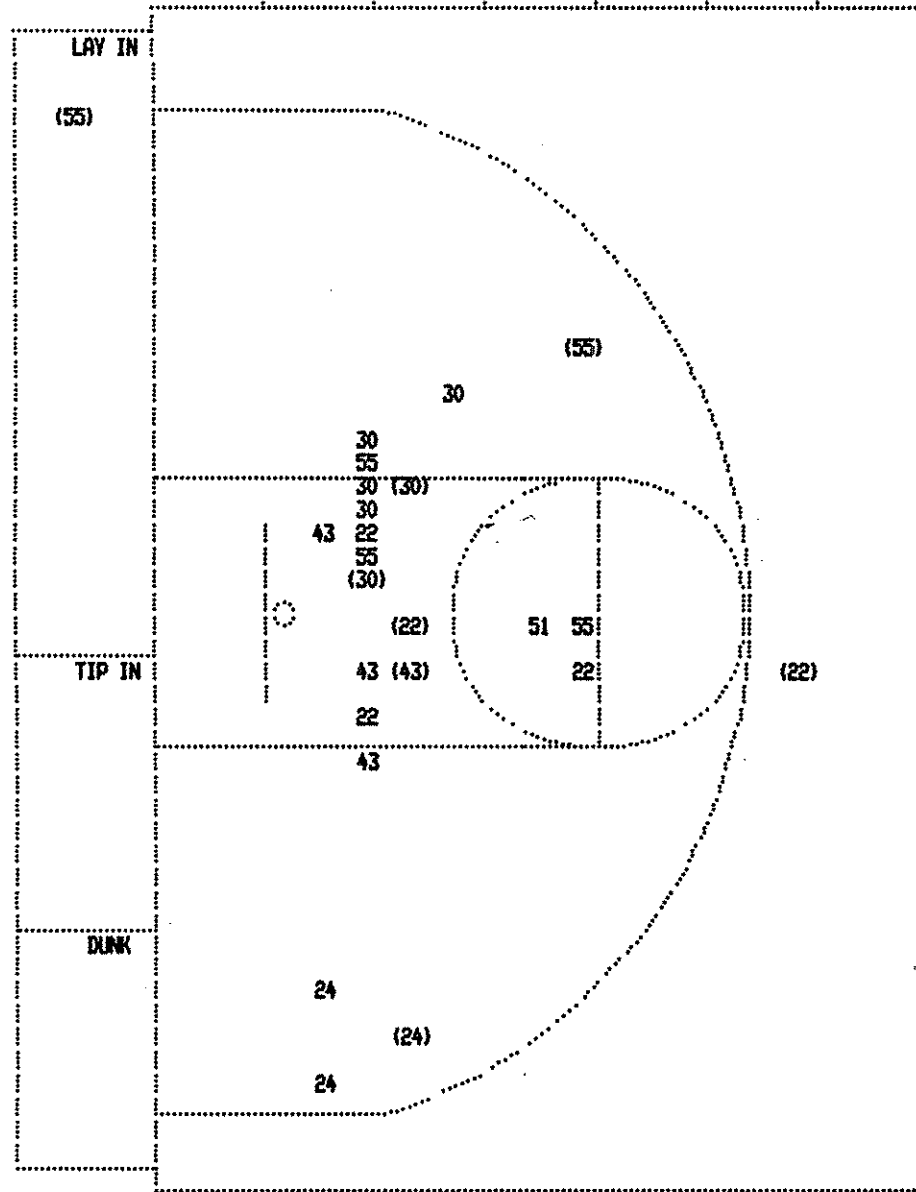
Southern No. 1

REB: 10 A: 3 BLK: 0 TO: 4 PF: 0
S: 3 FT: 0-0 00.0% FG: 10-18 55.5%

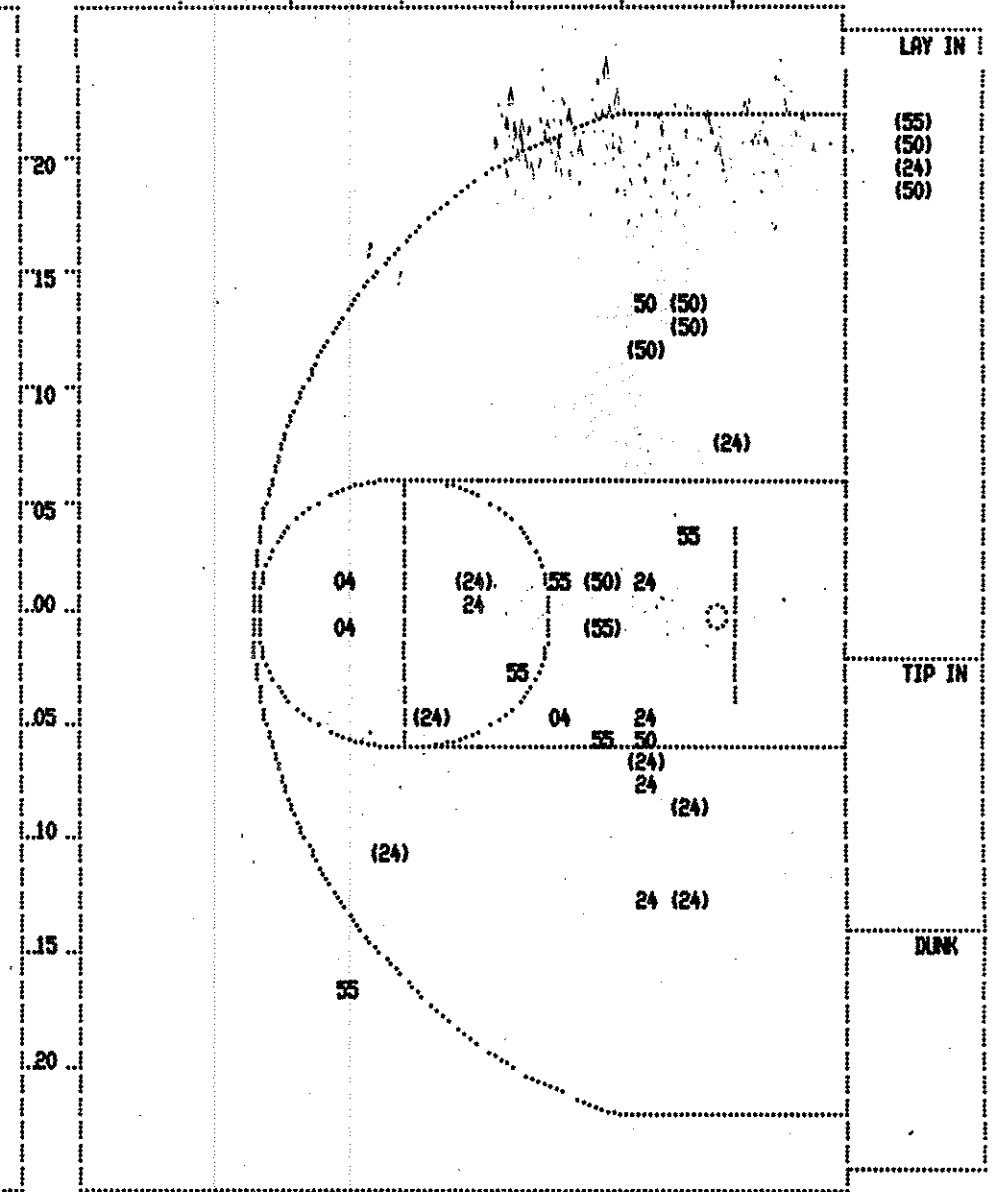
Sub In: James, Ramonda Out: Mills, Johnnye

Foul on Williams, Sam.
Sub In: Doyle, Gwen Out: Smith, Angie

FIRST HALF SHOT CHART Produced by the K.H.S.A.A. Stat Crew with FINAL III™



Player	Manual	Player	Manual	Player	Manual
43 - Doyle, Gwe	1 / 4	25.0%	51 - Smith, Ang	0 / 1	0.0%
55 - Williams,	2 / 5	40.0%			
30 - James, Ram	2 / 6	33.3%			
22 - Dean, Mone	2 / 5	40.0%			
24 - Drummond,	1 / 3	33.3%			
Layups	1-9 Ft	10-15 Ft	Over 15 Ft	3 Pointers	Total
1 / 1	4 / 15	0 / 4	2 / 4	1 / 1	8 / 25
100.0%	26.7%	0.0%	50.0%	100.0%	32.0%



Player	Southern	Player	Southern		
24 - Harrison,	8 / 13	61.5%			
50 - Collins, C	6 / 8	75.0%			
55 - Moore, Mic	2 / 7	28.5%			
04 - Burden, Mic	0 / 3	0.0%			
Layups	1-9 Ft	10-15 Ft	Over 15 Ft	3 Pointers	Total
4 / 4	5 / 14	6 / 9	1 / 3	0 / 1	16 / 31
100.0%	35.7%	66.7%	33.3%	0.0%	51.6%